

Accessories

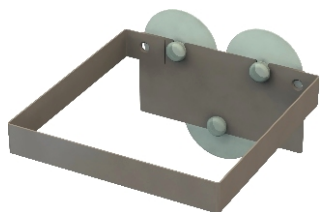
Bio-bin[®]
6Ltr Pipette

A variety of stainless steel accessories are available for use with the Bio-bin 6Ltr Pipette. These stands have been designed to increase the versatility of the 6Ltr Bio-bin.

Bio-bin Pipette has been specifically designed to safely contain large used pipettes. It has a 96% paper construction that is easy to use and is approved to Un3291.



USTAND holds **Bio-bin[®] 6Ltr Pipette** at a 30° angle, making it perfect for use in a fume cupboard. This holds it at a suitable angle for pipettes to be easily placed in the bin. Stand comes with 4 rubber feet in order to protect the surface it sits on.



Wall Bracket holds **Bio-bin[®] 6Ltr Pipette** upright and can be attached to any vertical surface either with screws or with suckers. Suckers allow easy removal and re-positioning without creating any holes or marks.



ZSTAND holds **Bio-bin[®] 6Ltr Pipette** upright, either for bench or floor use and allows for easy removal of used bins. Stand comes with 4 rubber feet in order to protect the surface it sits on.

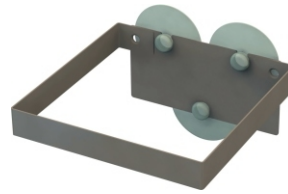


To claim your **FREE Bio-bin[®] SAMPLE** visit

www.econix.co.uk
 Helping you save money and the environment

Accessories

Specification sheet



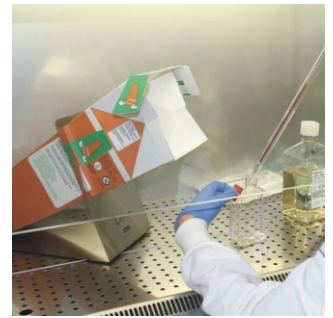
Product code

EXBBZS6.0PIP

EXBBWB6.0PIP

EXBBUS6.0PIP

Stands in use

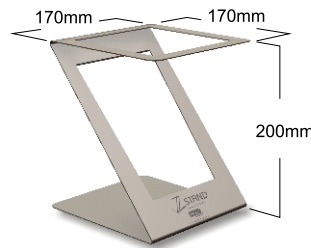


Z-stand Can be easily moved and positioned next to user, either on the floor or on the bench

Wall Bracket attached to bench makes it convenient to use where space is an issue

U-stand 30° angle means no awkward reaching to dispose of pipettes

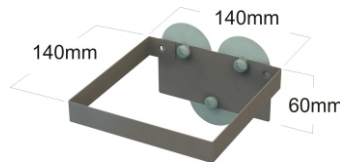
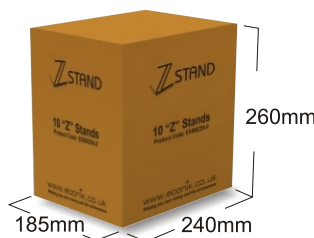
Logistics Info



605g

10 stands come stacked in each box

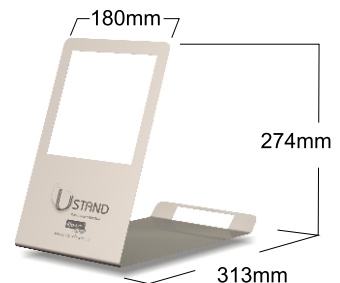
6.3Kg



150g

10 brackets come stacked in each box

1.8Kg



813g

10 stands come stacked in each box

8.5Kg

